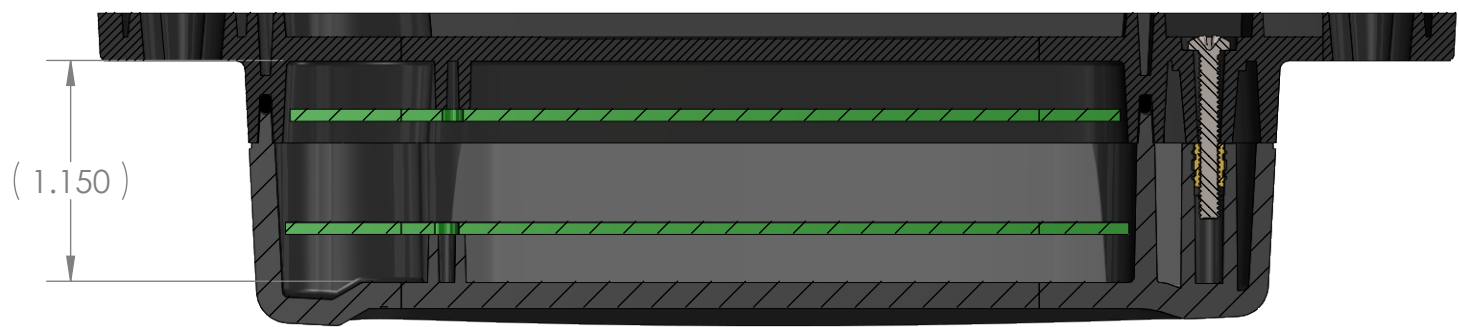
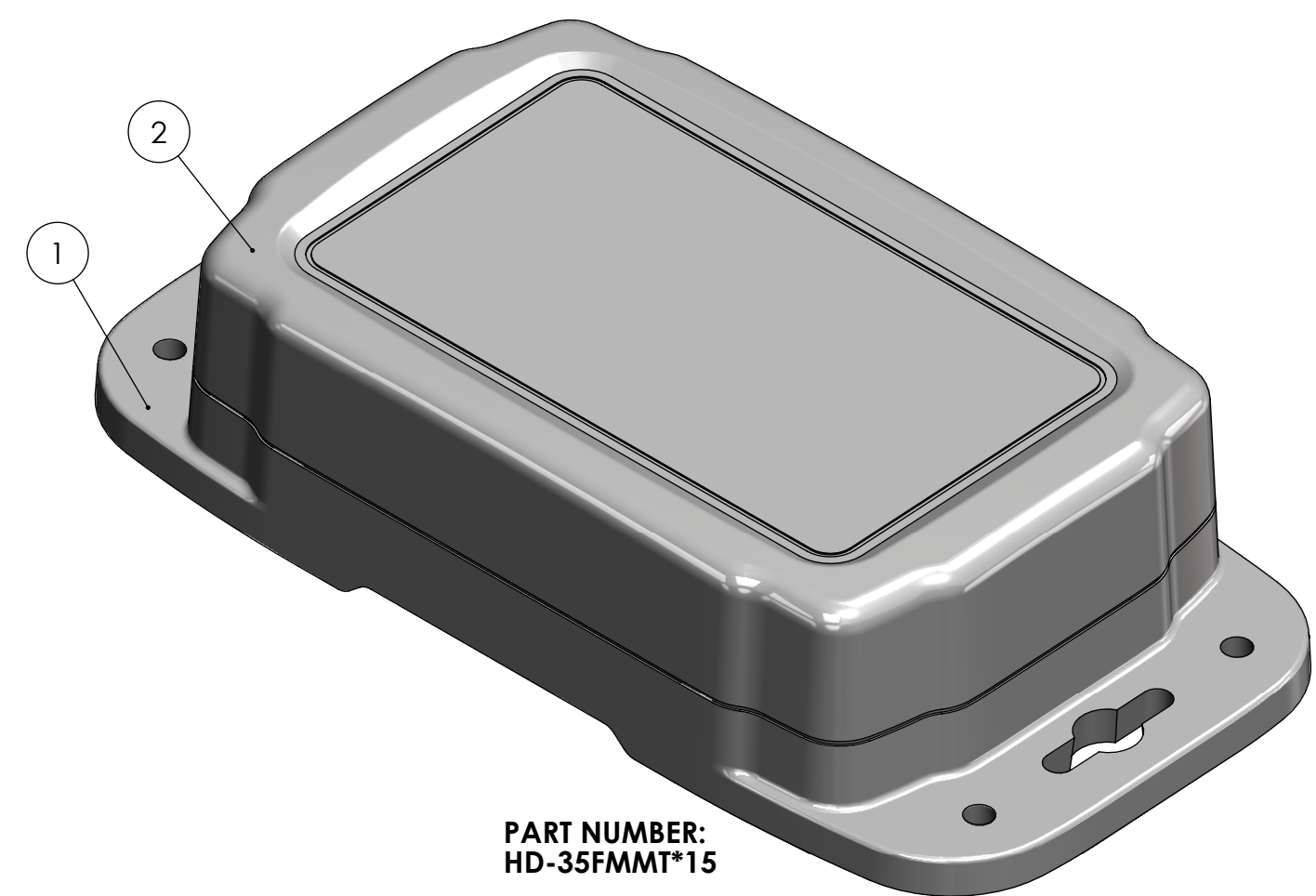
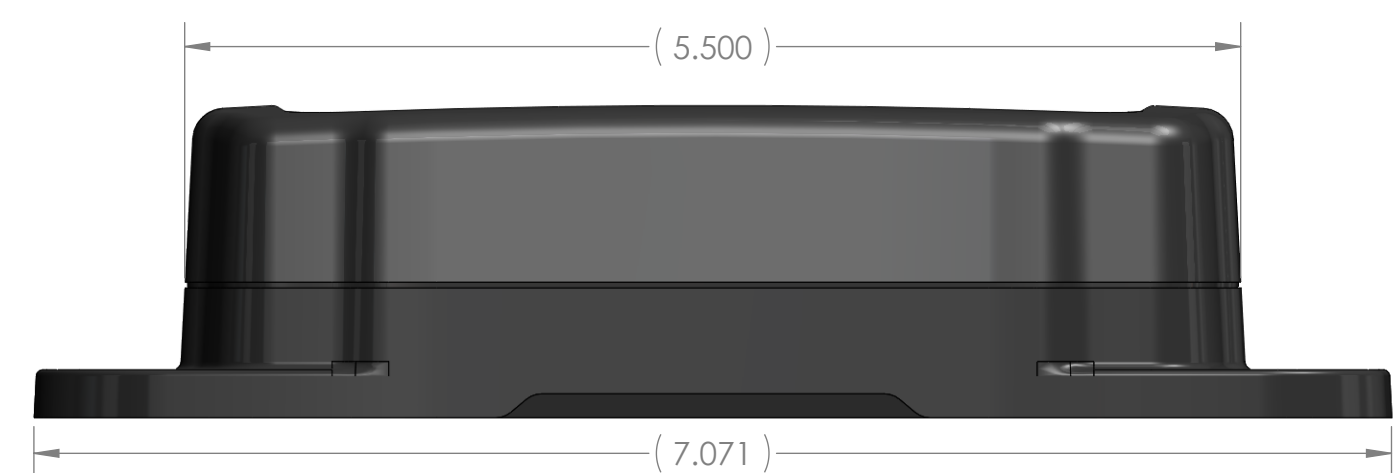
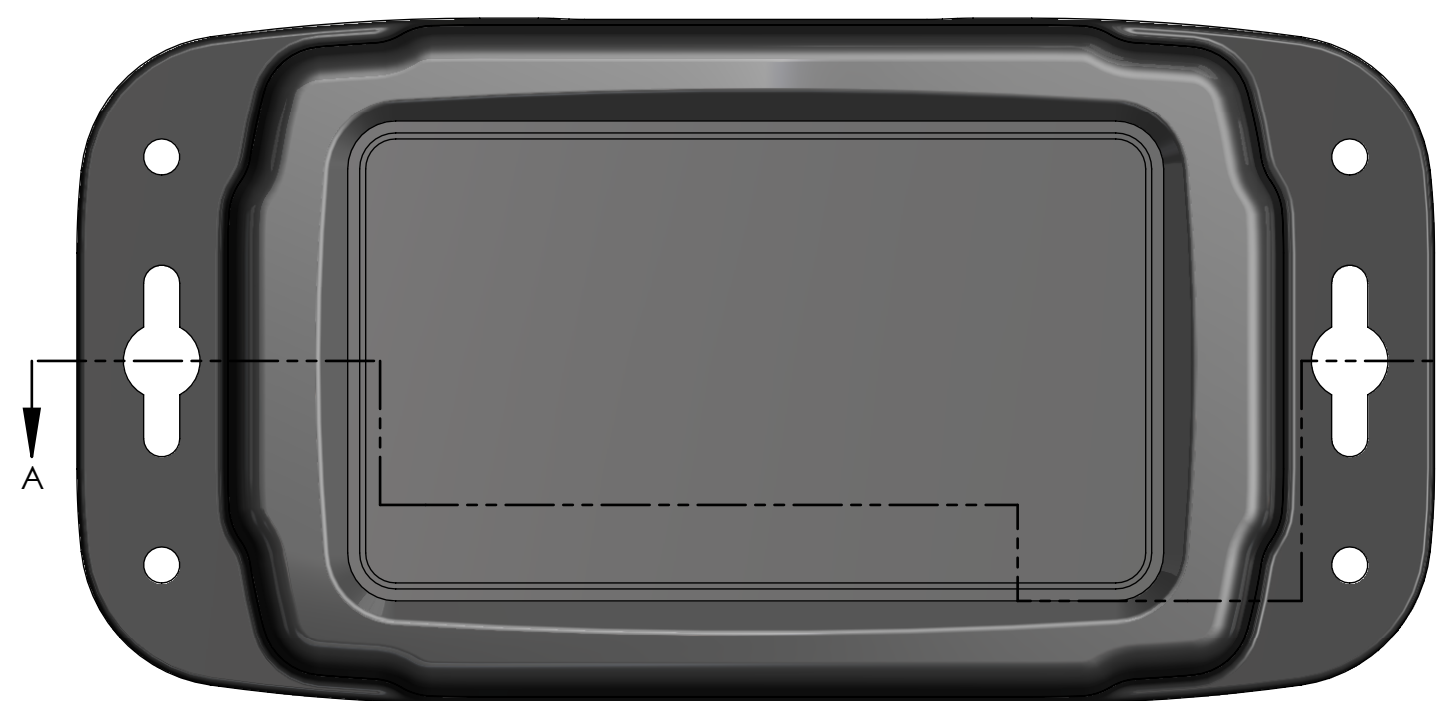
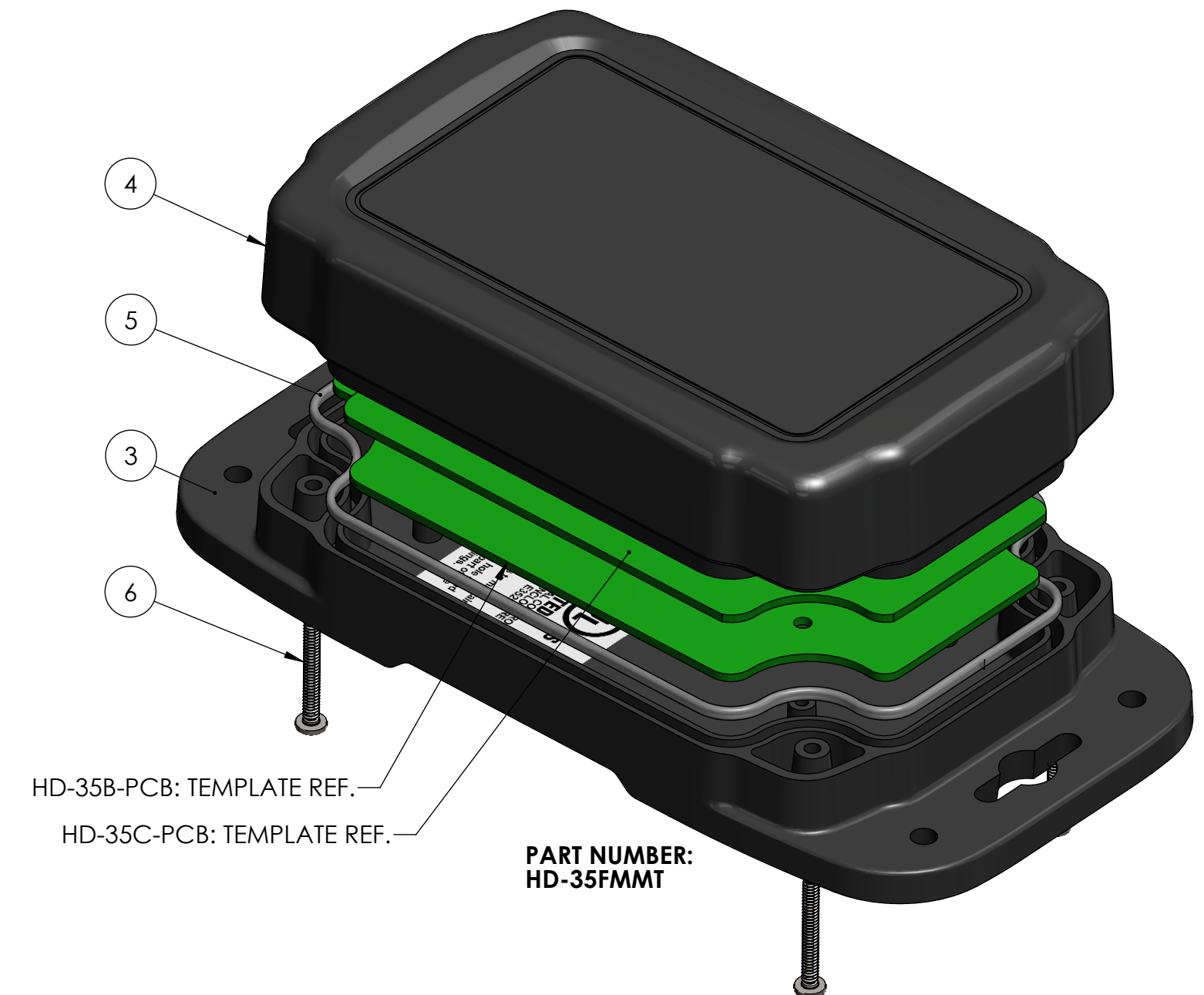
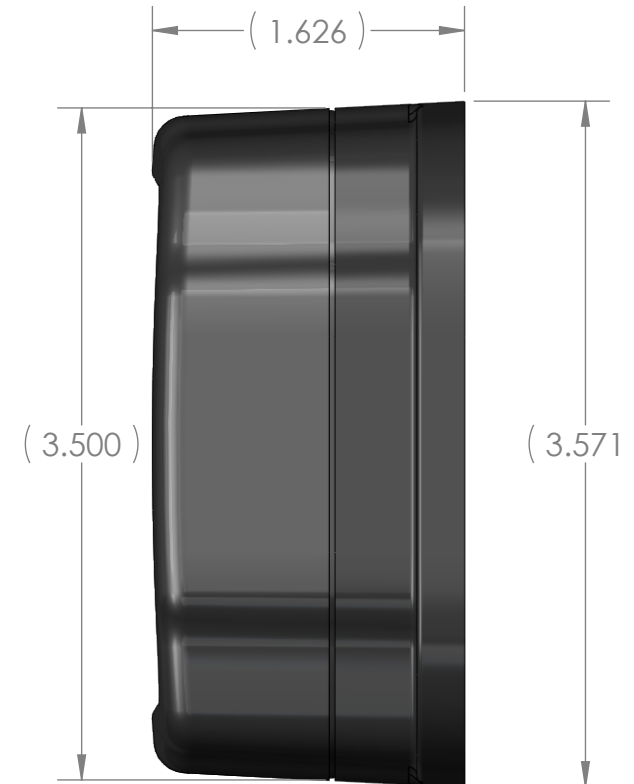


BOM Table							
ITEM NO.	PART NUMBER	DESCRIPTION	Material	FlameRating	Color	HD-35FMMT/QTY.	HD-35FMMT*15/QTY.
1	HD-35BFMB*15	BASE, W/FLANGES & PCB BOSSES	PC	5VA	GRAY (RAL 7035)	-	1
2	HD-35CMBT*15	COVER, TEXTURED RECESS, W/PCB BOSSES, W/BRASS INSERTS	PC	5VA	GRAY (RAL 7035)	-	1
3	HD-35BFMB	BASE, W/FLANGES & PCB BOSSES	PC	5VA	BLACK	1	-
4	HD-35CMBT	COVER, TEXTURED RECESS, W/PCB BOSSES, W/BRASS INSERTS	PC	5VA	BLACK	1	-
5	GASKET-35*08	GASKET	SILICONE		CLEAR	1	1
6	SCREWS-SS7/8	4-40 X .875 LG PAN PHILLIPS MACHINE SCREW	SS			4	4



SECTION A-A



NOTES:  
 1. PCB BOSSES WILL ACCEPT A #4 X .250 LONG THREAD FORMING SCREW (SCREWS AVAILABLE FROM POLYCASE)  
 2. RECOMMENDED TORQUE SETTING FOR ASSEMBLY SCREWS: 6.25 IN-LBS

REV.	DESCRIPTION	ZONE	BY	APPR'D	DATE
-03	REVISED BASE AND COVER MATERIAL			D.M.F.	C.C.B. 1/10/2019
-02	ADDED GRAY VERSION			D.M.F.	1/13/2014
-01	UPDATED SHEET FORMAT			D.M.F.	D.M.F. 4/8/2011
-	PRELIMINARY RELEASE			D.M.F.	B.M.B. 1/13/2010

UNLESS OTHERWISE SPECIFIED:  
 DIMENSIONS ARE IN: INCHES[mm]  
 TOLERANCES: ANGULAR: ±2°  
 TWO PLACE DECIMAL: ±.030  
 THREE PLACE DECIMAL: ±.015  
 PRINTED GRAPHICS: ±.010

PROPRIETARY AND CONFIDENTIAL  
 THE INFORMATION CONTAINED IN THIS DRAWING IS THE SOLE PROPERTY OF POLYCASE. ANY REPRODUCTION IN PART OR AS A WHOLE WITHOUT THE WRITTEN PERMISSION OF POLYCASE IS PROHIBITED.  
 CAD FILE: HD-35FMMT

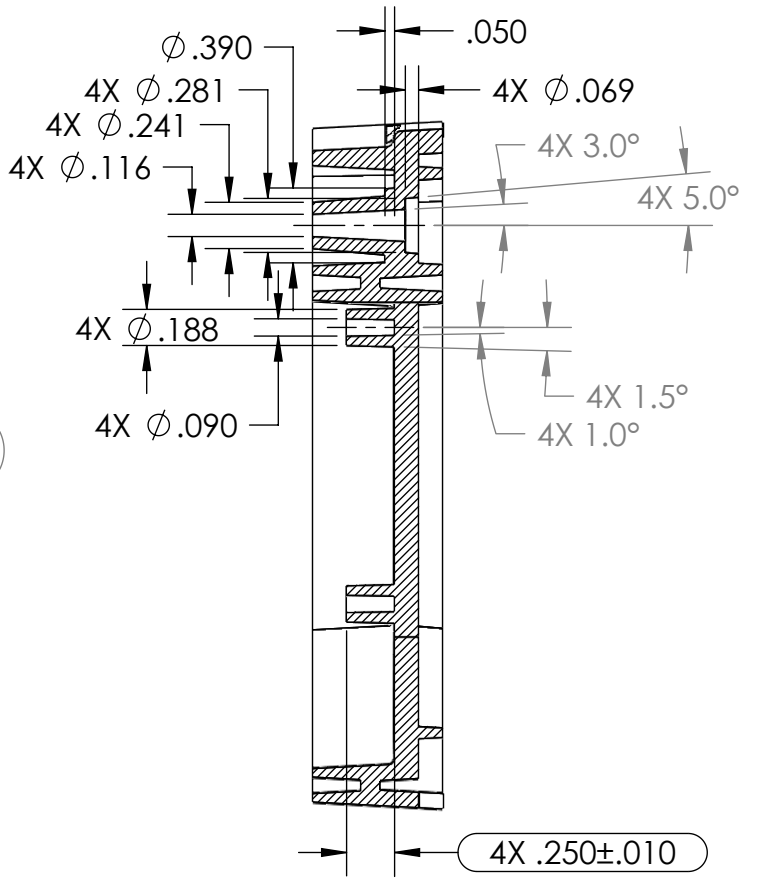
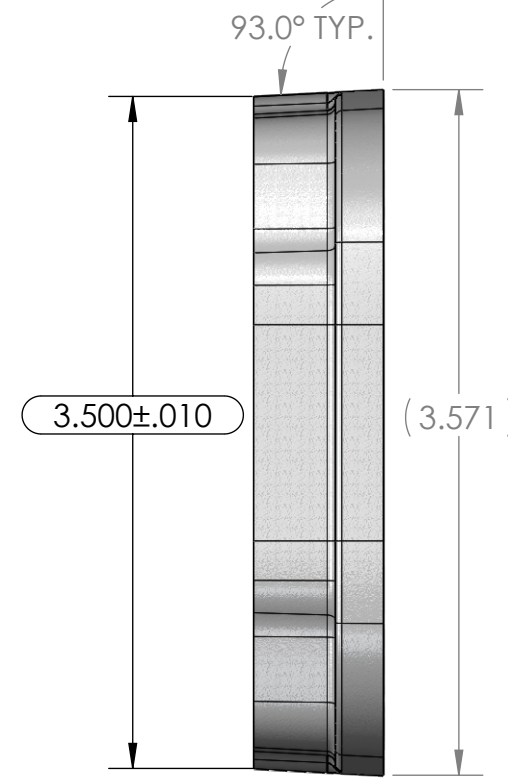
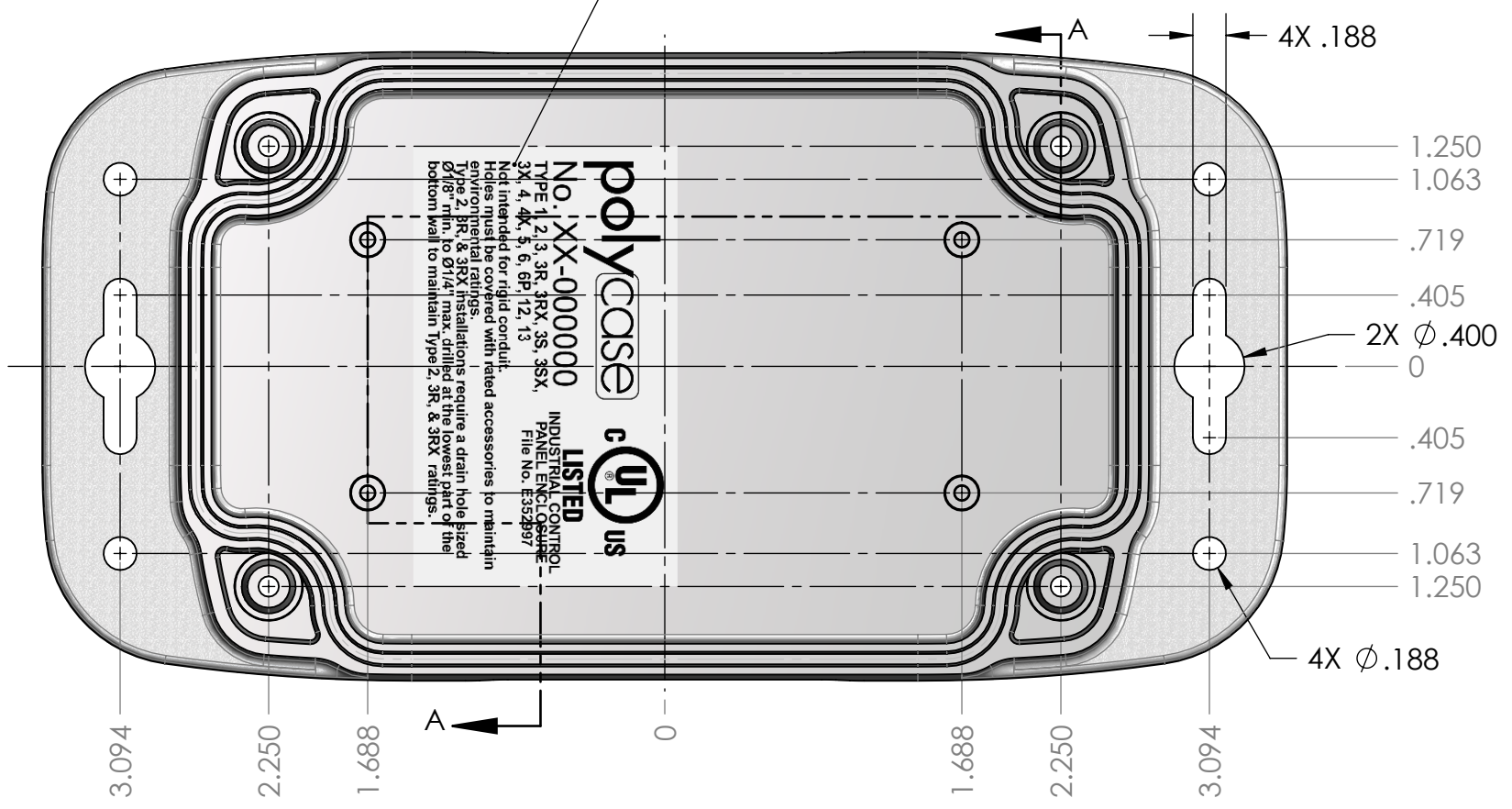
PART NO. HD-35FMMT	MATERIAL	FLAME RATING UL94V-0	SIZE C
NAME D.M.F.	DATE 11/18/2009	SCALE: 1:1	REV -02
CHECKED B.M.B.	DATE 1/13/2010		SHEET 1 OF 1

1305 CHESTER RD. PARKWAY AVON, OHIO 44011-1083 U.S.A.  
 PH: 1-800-548-1233 440-934-0444 FAX: 440-934-0088

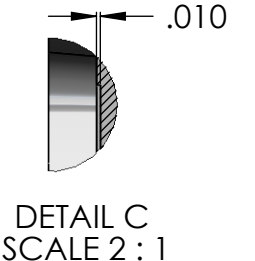
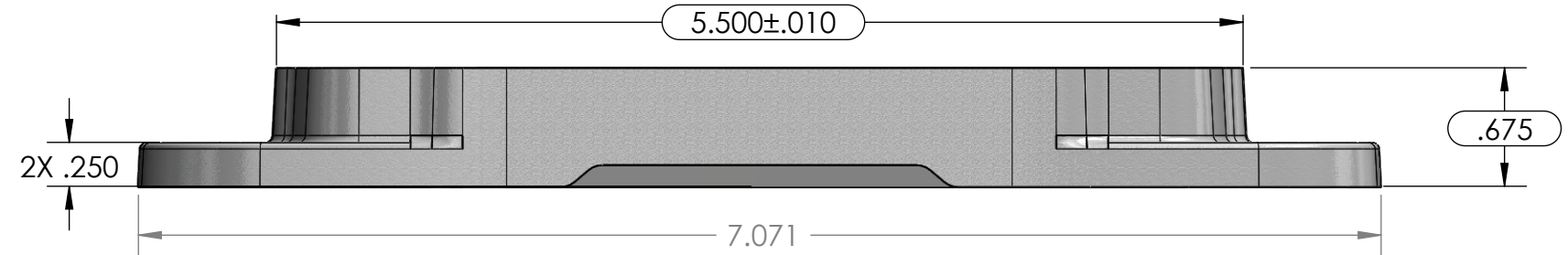
polycase  
 HD-35 ASM

		TOLERANCE CHART																				
DIMENSION RANGE		0	.039	.118	.236	.394	.591	.866	1.181	1.575	2.087	2.756	3.543	4.724	6.299	7.874	9.843	12.402	15.748	19.685	24.803	31.496
TOOL DEPENDENT		±.007	±.007	±.008	±.008	±.009	±.010	±.011	±.012	±.013	±.015	±.017	±.020	±.024	±.028	±.035	.043	.051	.063	.079	.098	.118
NON-TOOL DEPENDENT		±.003	±.004	±.004	±.004	±.005	±.006	±.007	±.008	±.009	±.011	±.013	±.016	±.020	±.024	±.031	.039	.047	.059	.075	.094	.114

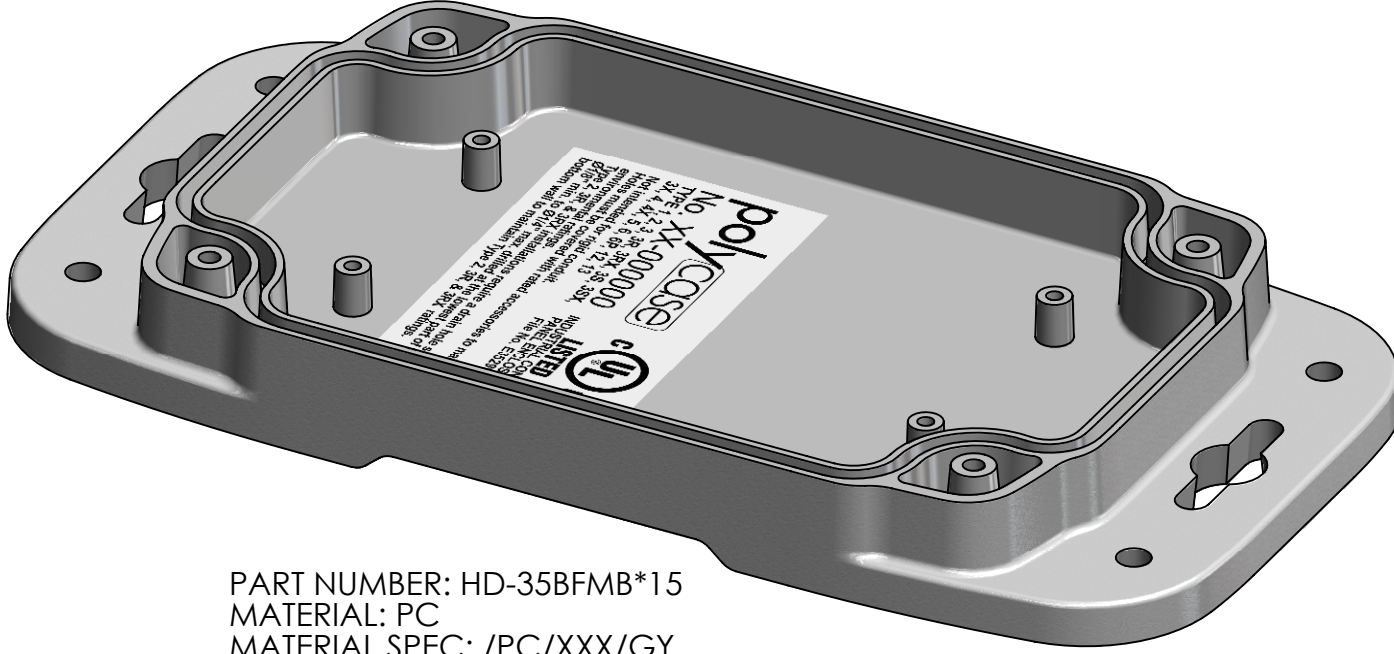
LABEL-103, APPROX. POSITION



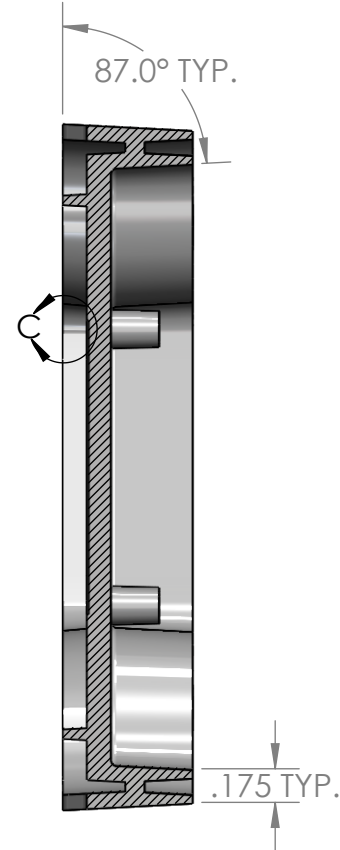
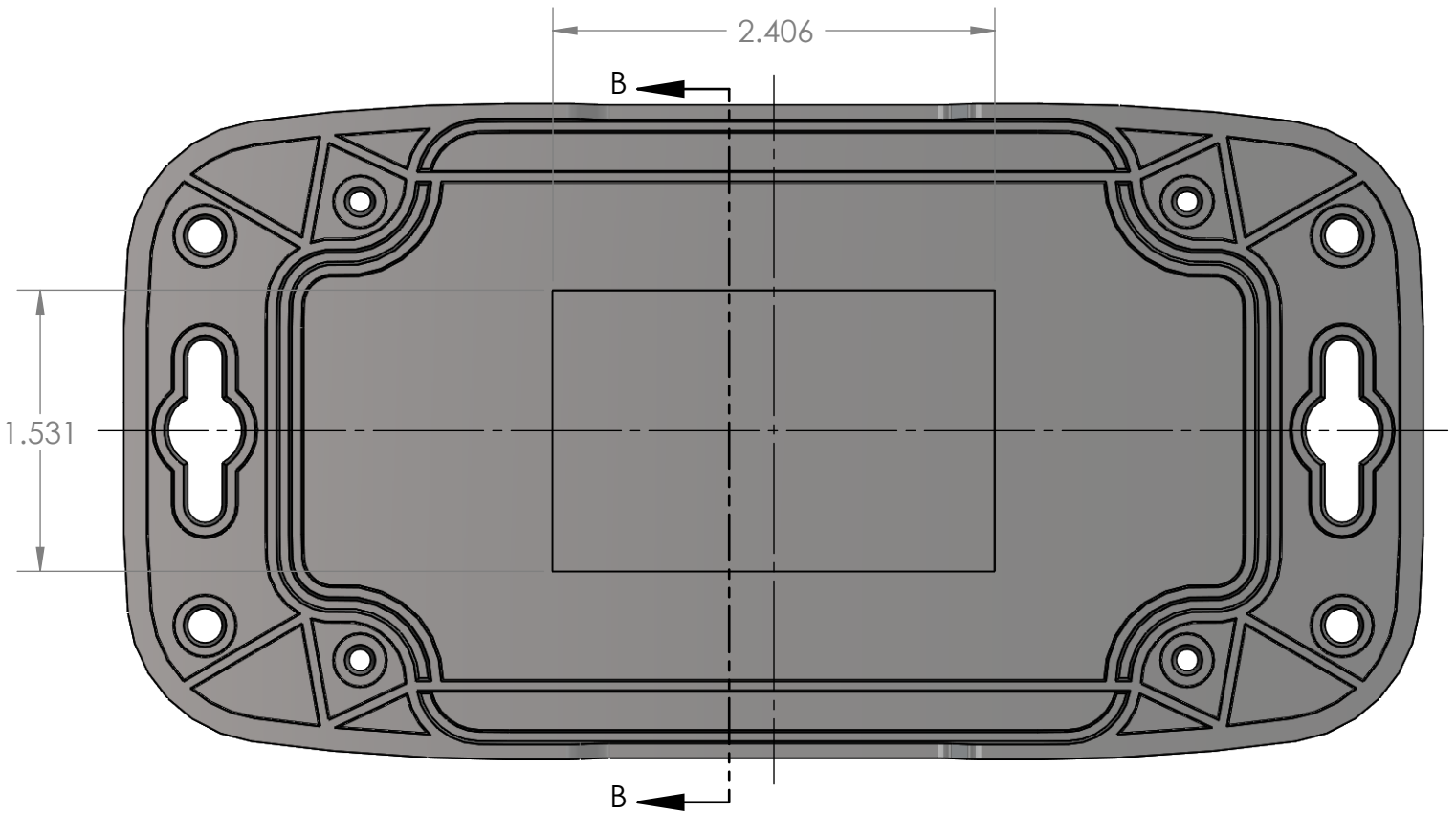
SECTION A-A



DETAIL C SCALE 2:1



PART NUMBER: HD-35BFMB\*15  
 MATERIAL: PC  
 MATERIAL SPEC: /PC/XXX/GY  
 COLOR: GRAY (RAL 7035)  
 FLAME RATING: 5VA



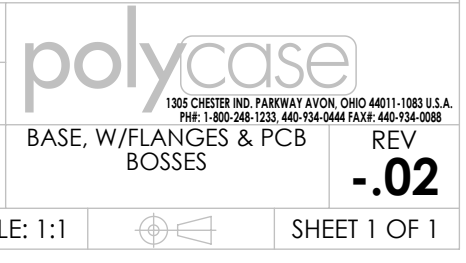
SECTION B-B



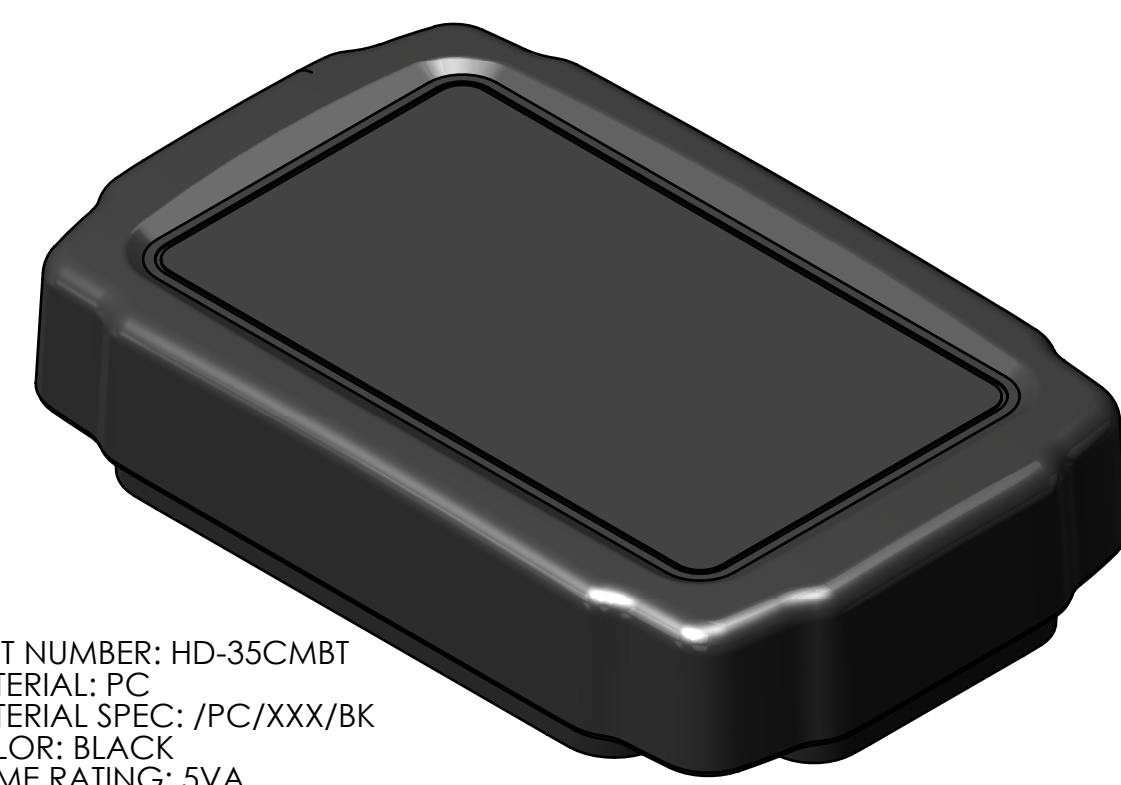
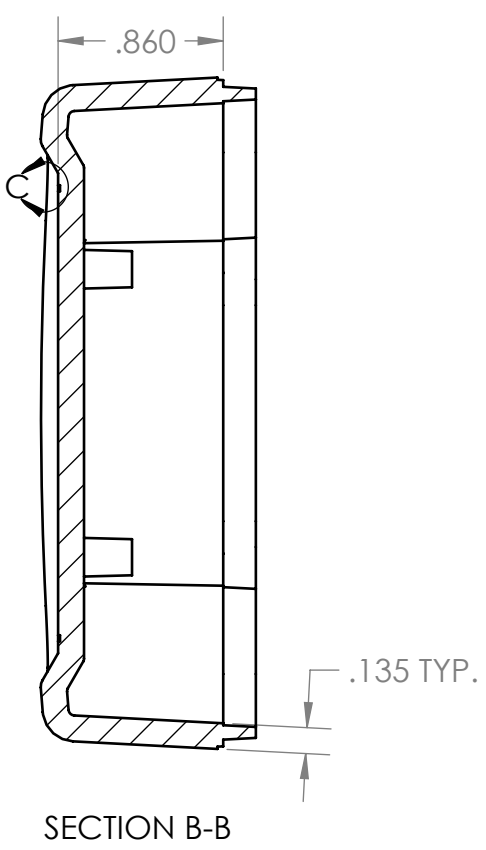
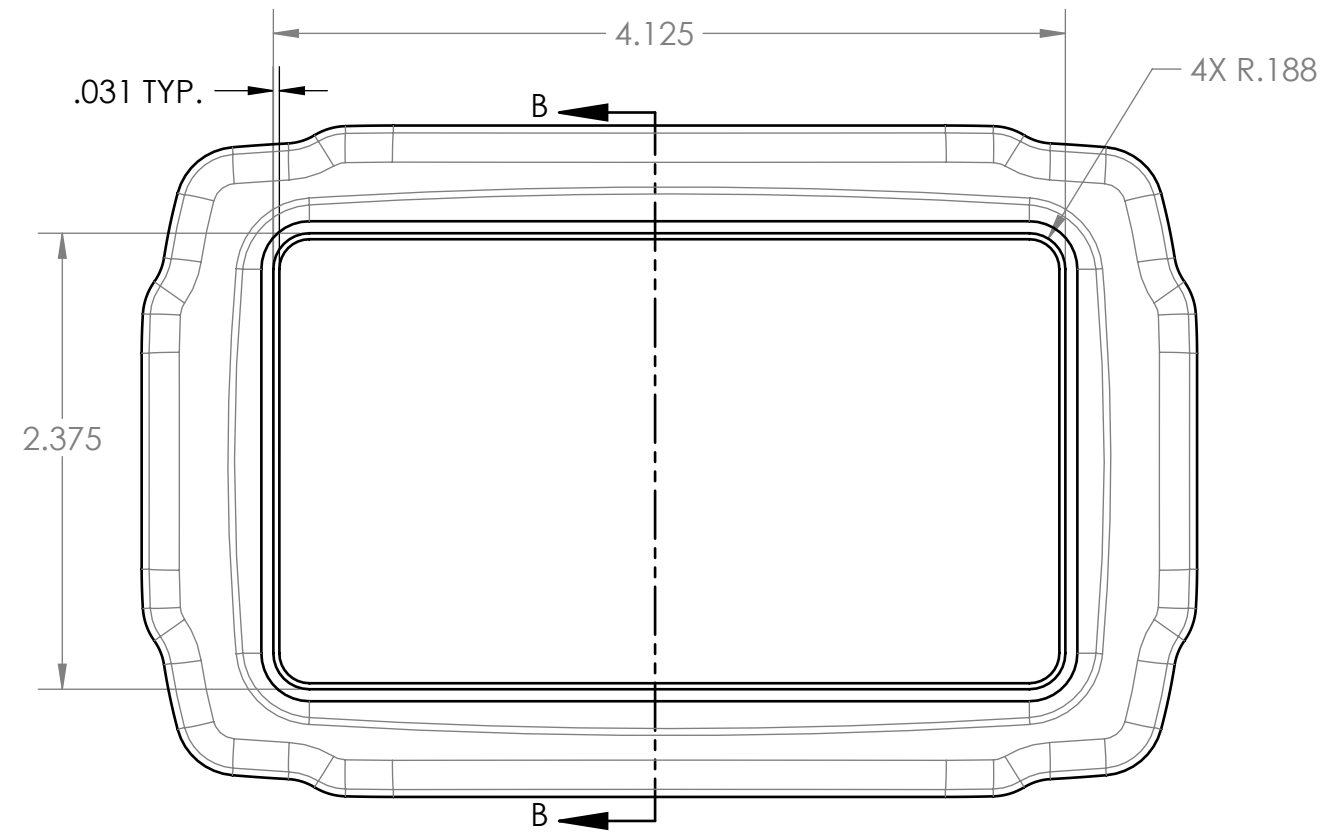
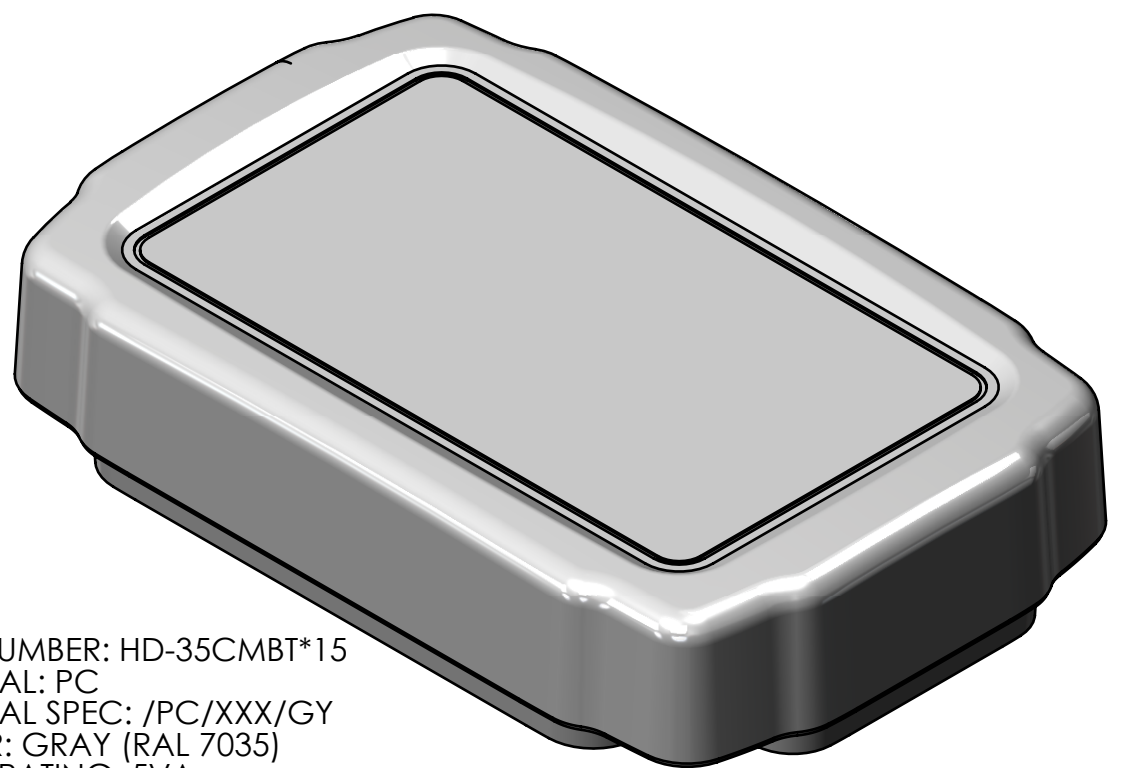
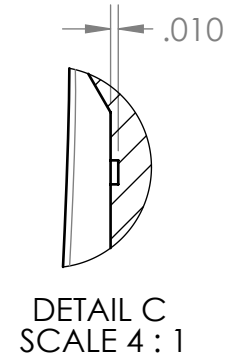
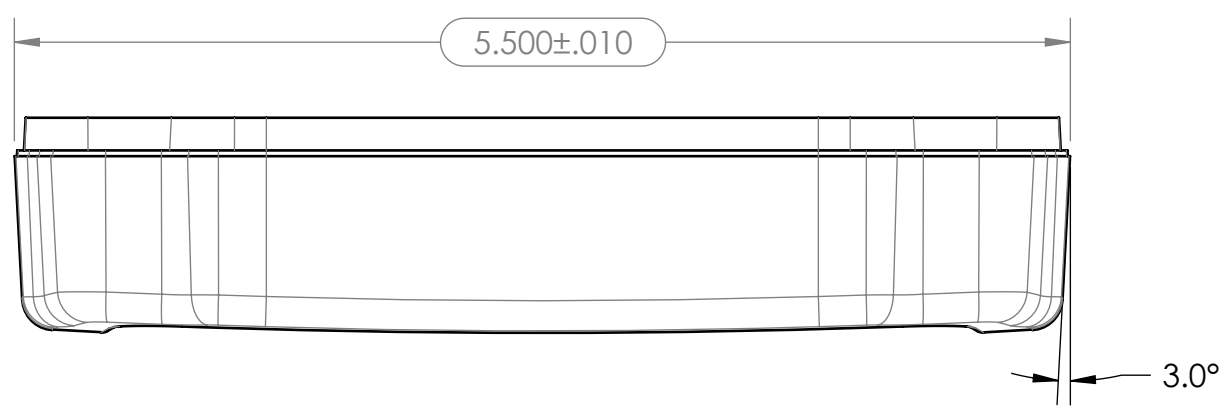
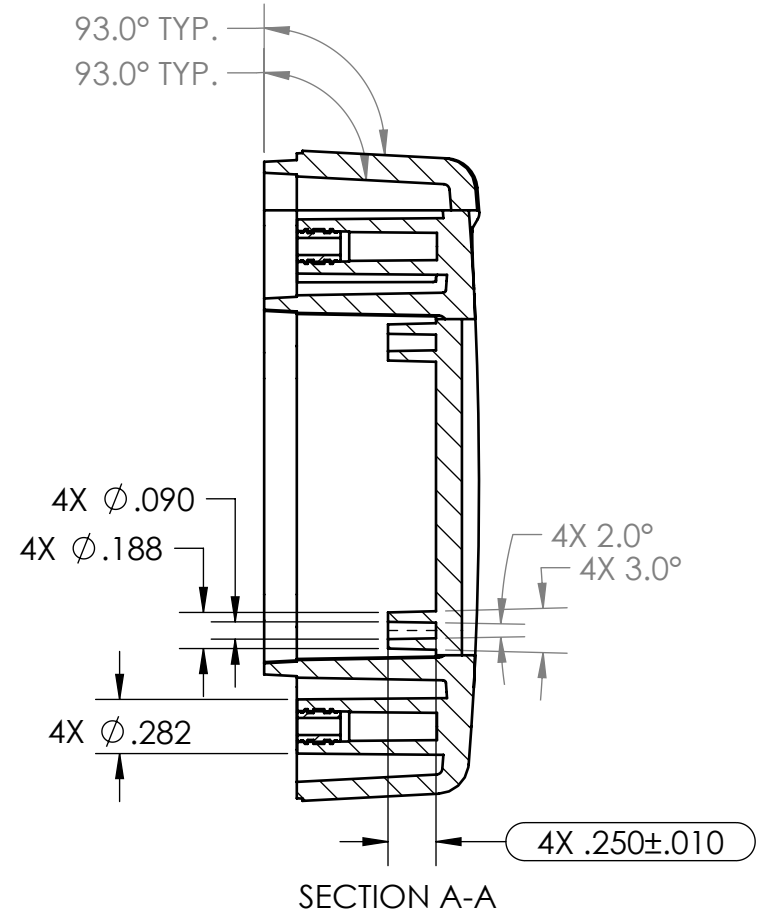
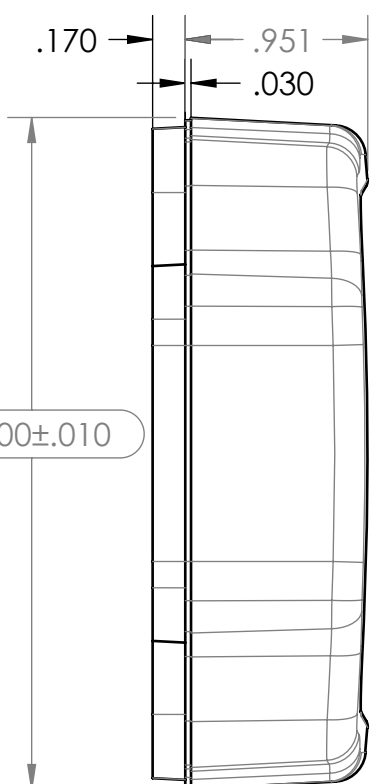
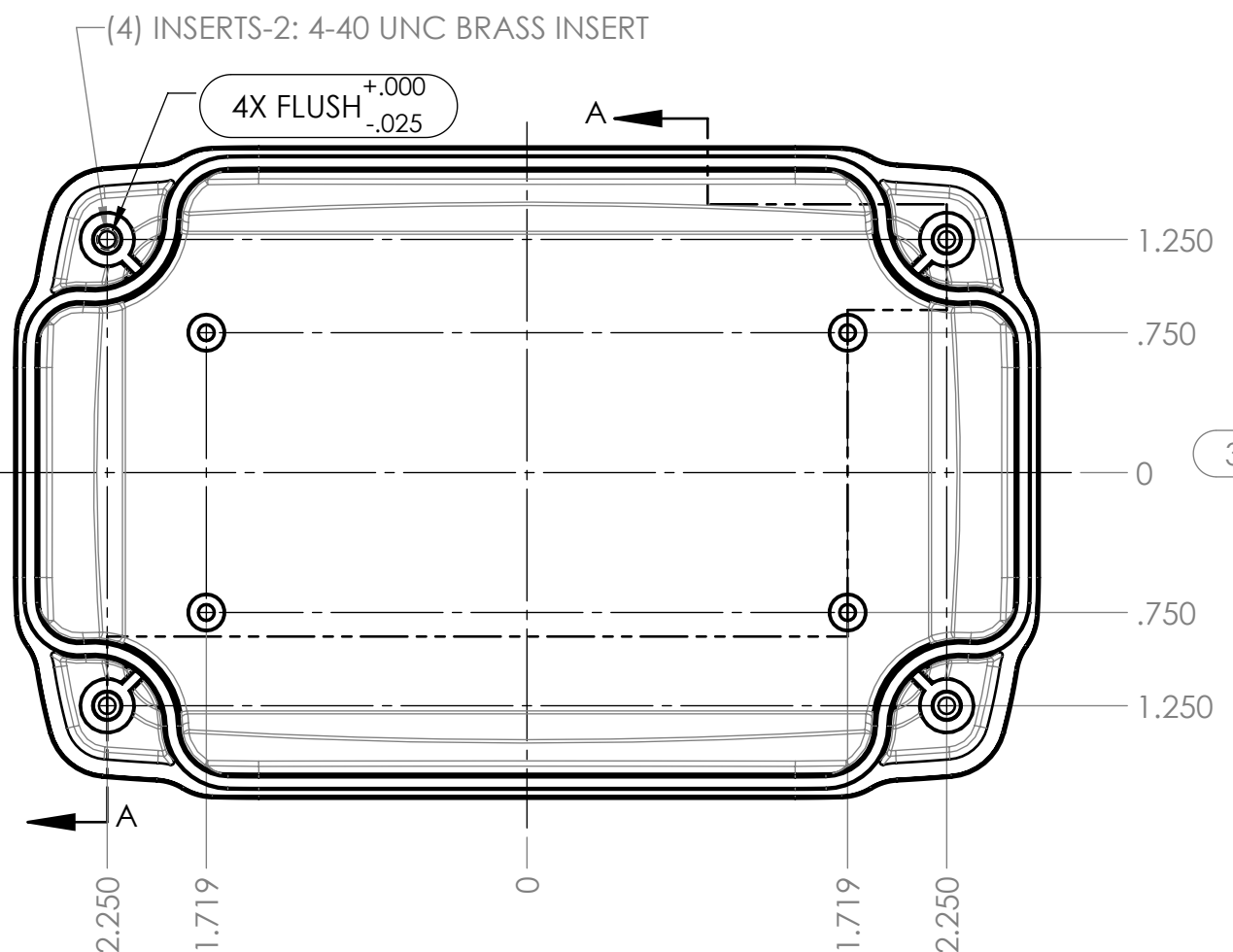
PART NUMBER: HD-35BFMB  
 MATERIAL: PC  
 MATERIAL SPEC: /PC/XXX/BK  
 COLOR: BLACK  
 FLAME RATING: 5VA

- NOTES:  
 1. (INSPECTION DIMENSION)  
 2. EJECTOR PINS TO BE FLUSH ±.010  
 3. FLASH .005 MAX  
 4. GATE MUST BE FLUSH ±.030

UNLESS OTHERWISE SPECIFIED: DIMENSIONS ARE IN: INCHES[mm] TOLERANCES: ANGULAR: ±2° TWO PLACE DECIMAL: ±.03 THREE PLACE DECIMAL: ±.010 PRINTED GRAPHICS: ±.010				PART NO. HD-35BFMB*15		MATERIAL PC		FLAME RATING 5VA		SIZE C		BASE, W/FLANGES & PCB BOSSSES		REV -02	
REV.	DESCRIPTION	ZONE	BY	APPR'D	DATE	DRAWN CHECKED	NAME B.M.B.	DATE	SCALE: 1:1	SHEET 1 OF 1					
-03	MATERIAL /PC/XXX/BK WAS /PC/P1310FR/BK, FLAME RATING 5VA WAS UL94V-0		D.M.F.	C.C.B.	1/10/2019										
-02	ADDED GRAY VERSION		D.M.F.		1/13/2014										
-01	UPDATED SHEET FORMAT		D.M.F.	D.M.F.	4/8/2011										
-	PRELIMINARY RELEASE		D.M.F.	B.M.B.	1/13/2010										



		TOLERANCE CHART																				
DIMENSION RANGE		0	.039	.118	.236	.394	.591	.866	1.181	1.575	2.087	2.756	3.543	4.724	6.299	7.874	9.843	12.402	15.748	19.685	24.803	31.496
TOOL DEPENDENT		±.007	±.007	±.008	±.008	±.009	±.010	±.011	±.012	±.013	±.015	±.017	±.020	±.024	±.028	±.035	.043	.051	.063	.079	.098	.118
NON-TOOL DEPENDENT		±.003	±.004	±.004	±.004	±.005	±.006	±.007	±.008	±.009	±.011	±.013	±.016	±.020	±.024	±.031	.039	.047	.059	.075	.094	.114



- NOTES:
- INSPECTION DIMENSION
  - EJECTOR PINS TO BE FLUSH ±.010
  - FLASH .005 MAX
  - GATE MUST BE FLUSH ±.030

REV.	DESCRIPTION	ZONE	BY	APPR'D	DATE
-.03	MATERIAL /PC/XXX/BK WAS /PC/P1310FR/BK, FLAME RATING 5VA WAS UL94V-0		D.M.F.	C.C.B.	1/10/2019
-.02	ADDED GRAY VERSION		D.M.F.		1/13/2014
-.01	MOVED INSERTS TO THE PART LEVEL		D.M.F.	D.M.F.	4/11/2011
	PRELIMINARY RELEASE		D.M.F.	B.M.B.	1/13/2010

UNLESS OTHERWISE SPECIFIED:  
 DIMENSIONS ARE IN: INCHES[mm]  
 TOLERANCES: ANGULAR: ±2°  
 TWO PLACE DECIMAL: ±.030  
 THREE PLACE DECIMAL: ±.015  
 PRINTED GRAPHICS: ±.010

PROPRIETARY AND CONFIDENTIAL  
 THE INFORMATION CONTAINED IN THIS  
 DRAWING IS THE SOLE PROPERTY OF  
 POLYCASE. ANY REPRODUCTION IN PART  
 OR AS A WHOLE WITHOUT THE WRITTEN  
 PERMISSION OF POLYCASE IS PROHIBITED.  
 CAD FILE: HD-35CMBT

PART NO. HD-35CMBT	MATERIAL PC	FLAME RATING 5VA	SIZE C
-----------------------	----------------	---------------------	-----------

COVER, TEXTURED RECESS,  
W/PCB BOSSES, W/BRASS  
INSERTS

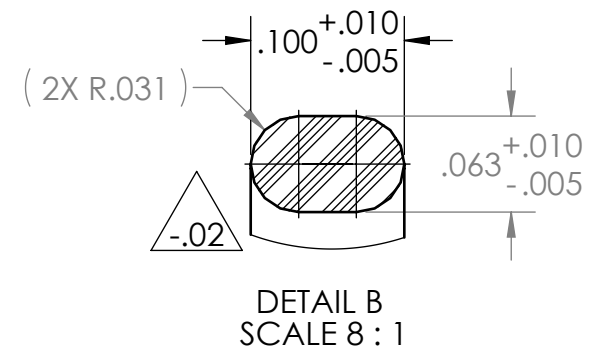
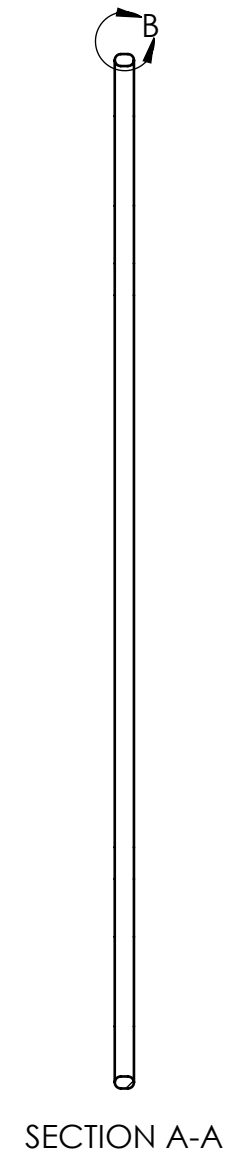
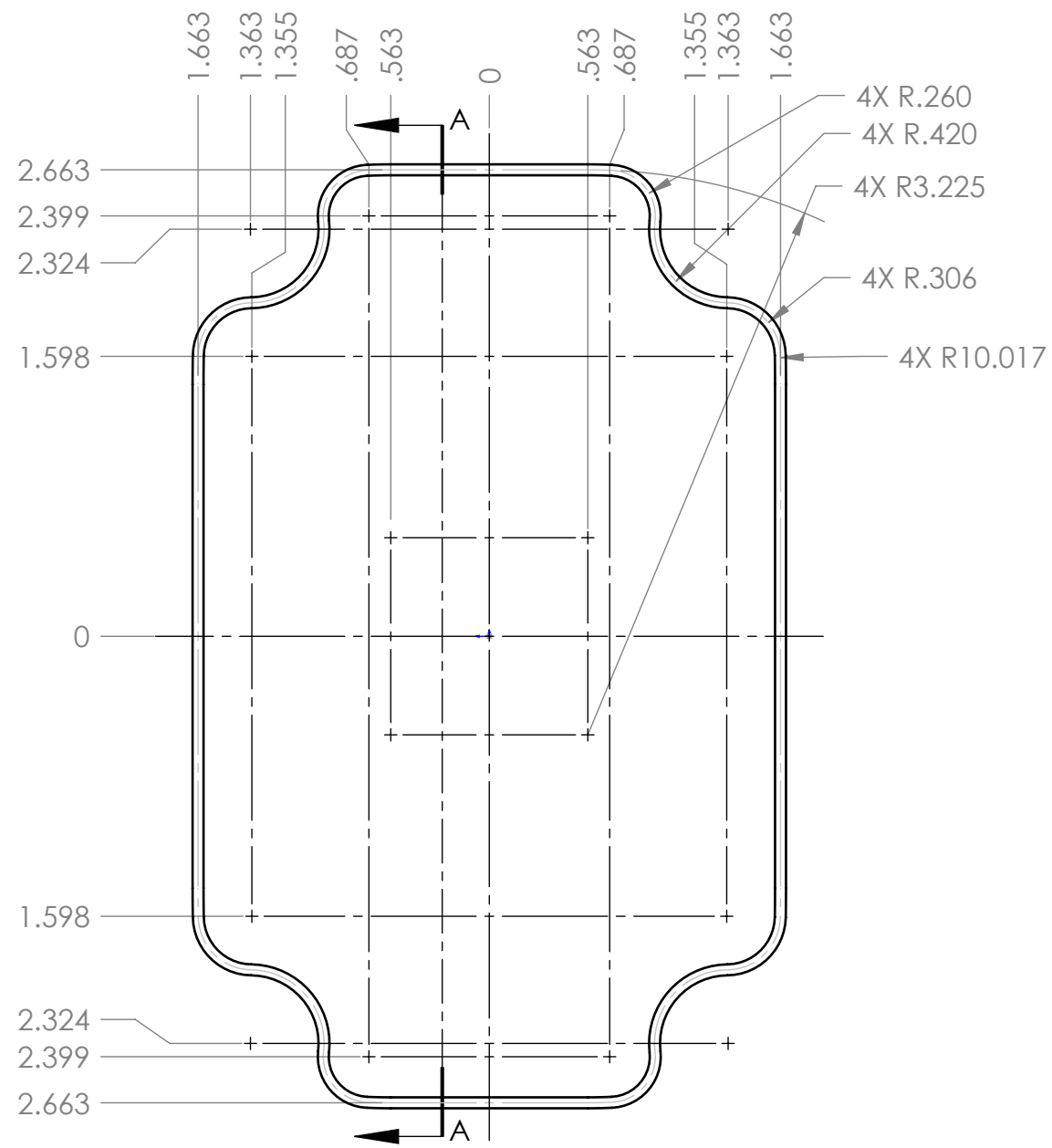
SCALE: 1:1

SHEET 1 OF 1

REV -02

1305 CHESTER RD. PARKWAY AVON, OHIO 44011-1083 U.S.A.  
 PH: 1-800-248-1233 440-934-0444 FAX: 440-934-0088

DRAWN: D.M.F. DATE: 12/14/2009  
 CHECKED: B.M.B. DATE: 1/13/2010



- NOTES:
- COLOR: CLEAR
  - MATERIAL SPEC: Momentive Performance Mat'ls TSE221-3U
  - INSPECTION DIMENSION
  - TOLERANCES UNLESS OTHERWISE SPECIFIED  $\pm .5\%$

REV.	DESCRIPTION	ZONE	BY	APPR'D	DATE
-.02	UPDATED MATERIAL, UPDATED TOLERANCES	B1	D.M.F.	C.C.B.	1/10/2019
-.01	UPDATED SHEET FORMAT		D.M.F.	D.M.F.	4/8/2011
-	PRELIMINARY RELEASE		D.M.F.	B.M.B.	1/13/2010

REVISIONS

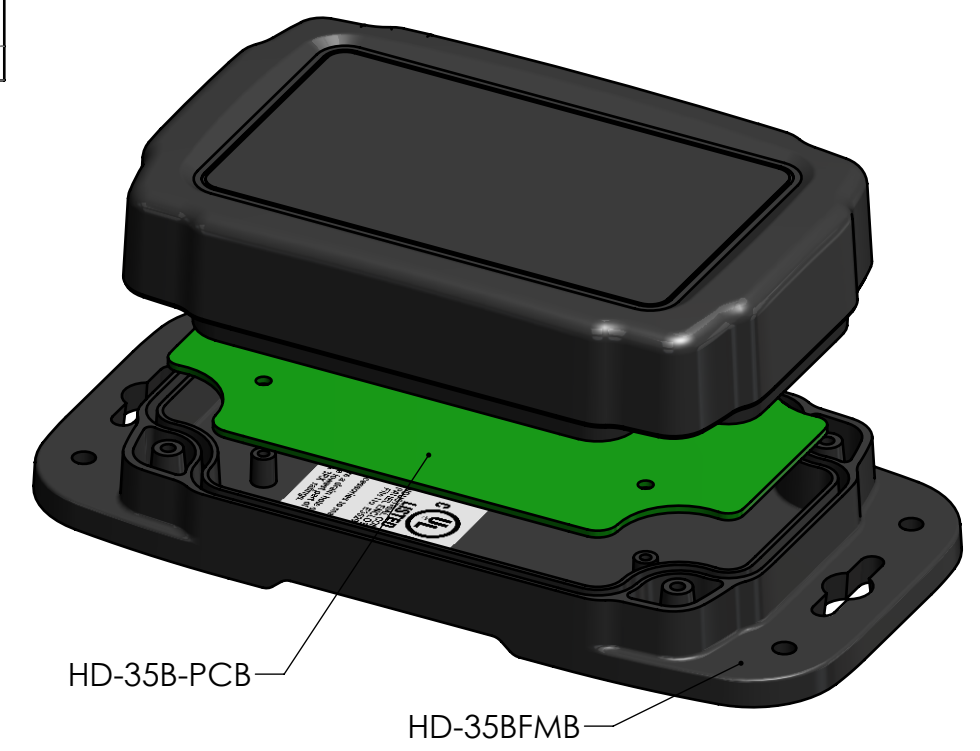
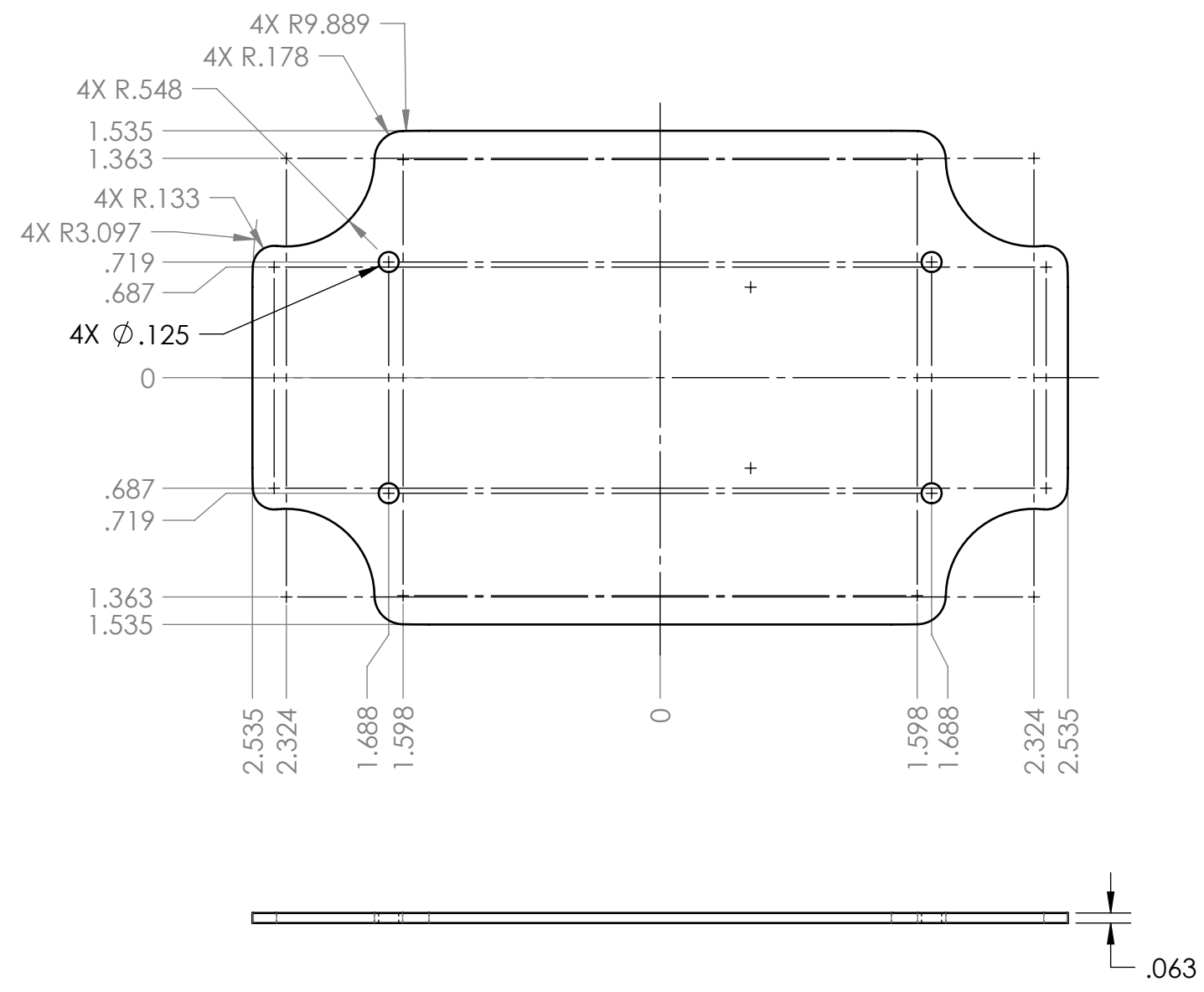
UNLESS OTHERWISE SPECIFIED:  
 DIMENSIONS ARE IN: INCHES[mm]  
 TOLERANCES: ANGULAR:  $\pm 2^\circ$   
 TWO PLACE DECIMAL:  $\pm .030$   
 THREE PLACE DECIMAL:  $\pm .015$   
 PRINTED GRAPHICS:  $\pm .010$

PROPRIETARY AND CONFIDENTIAL  
 THE INFORMATION CONTAINED IN THIS  
 DRAWING IS THE SOLE PROPERTY OF  
 POLYCASE. ANY REPRODUCTION IN PART  
 OR AS A WHOLE WITHOUT THE WRITTEN  
 PERMISSION OF POLYCASE IS PROHIBITED.  
 CAD FILE: Gasket-35

PART NO. GASKET-35*08		 <small>1305 CHESTER IND. PARKWAY AVON, OHIO 44011-1083 U.S.A.          PH#: 1-800-248-1233, 440-934-0444 FAX#: 440-934-0088</small>	
MATERIAL SILICONE			
FLAME RATING	SIZE <b>B</b>	GASKET	REV <b>-.02</b>
DRAWN D.M.F.	NAME D.M.F.	DATE 10/5/2009	 SCALE: 1:1 SHEET 1 OF 1
CHECKED B.M.B.	NAME B.M.B.	DATE 1/13/2010	

8 7 6 5 4 3 2 1

D  
C  
B  
A



- NOTES:  
 1. PCB SIZES INCLUDE .031 CLEARANCE FROM THE INTERIOR WHEN UTILIZING THE MOUNTING BOSSES FOUND ON THE HD-35BFMB BASE.  
 2. PCB BOSSES WILL ACCEPT A #4 X .250 LONG THREAD FORMING SCREW (SCREWS AVAILABLE FROM POLYCASE)

REV.	DESCRIPTION	ZONE	BY	APPR'D	DATE
-01	UPDATED SHEET FORMAT		D.M.F.	D.M.F.	4/8/2011
-	PRELIMINARY RELEASE		D.M.F.	B.M.B.	1/13/2010
REV.	DESCRIPTION	ZONE	BY	APPR'D	DATE

UNLESS OTHERWISE SPECIFIED:  
 DIMENSIONS ARE IN: INCHES[mm]  
 TOLERANCES: ANGULAR: ±2°  
 TWO PLACE DECIMAL: ±.010  
 THREE PLACE DECIMAL: ±.005  
 PRINTED GRAPHICS: ±.010

PROPRIETARY AND CONFIDENTIAL  
 THE INFORMATION CONTAINED IN THIS DRAWING IS THE SOLE PROPERTY OF POLYCASE. ANY REPRODUCTION IN PART OR AS A WHOLE WITHOUT THE WRITTEN PERMISSION OF POLYCASE IS PROHIBITED.  
 CAD FILE: HD-35B-PCB

PART NO. HD-35B-PCB		MATERIAL	
FLAME RATING		SIZE <b>B</b>	PCB TEMPLATE FOR HD-35BFMB
DRAWN	NAME D.M.F.	DATE 12/14/2009	REV <b>-.01</b>
CHECKED	B.M.B.	1/13/2010	SHEET 1 OF 1

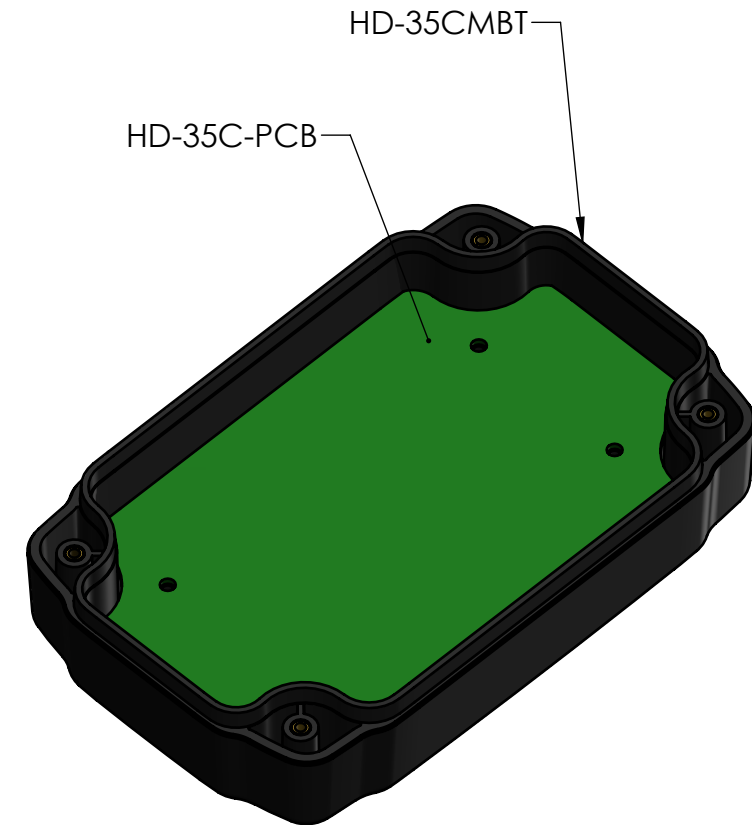
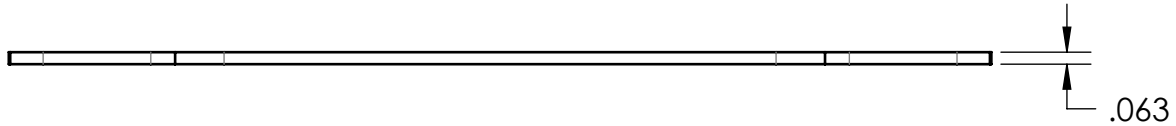
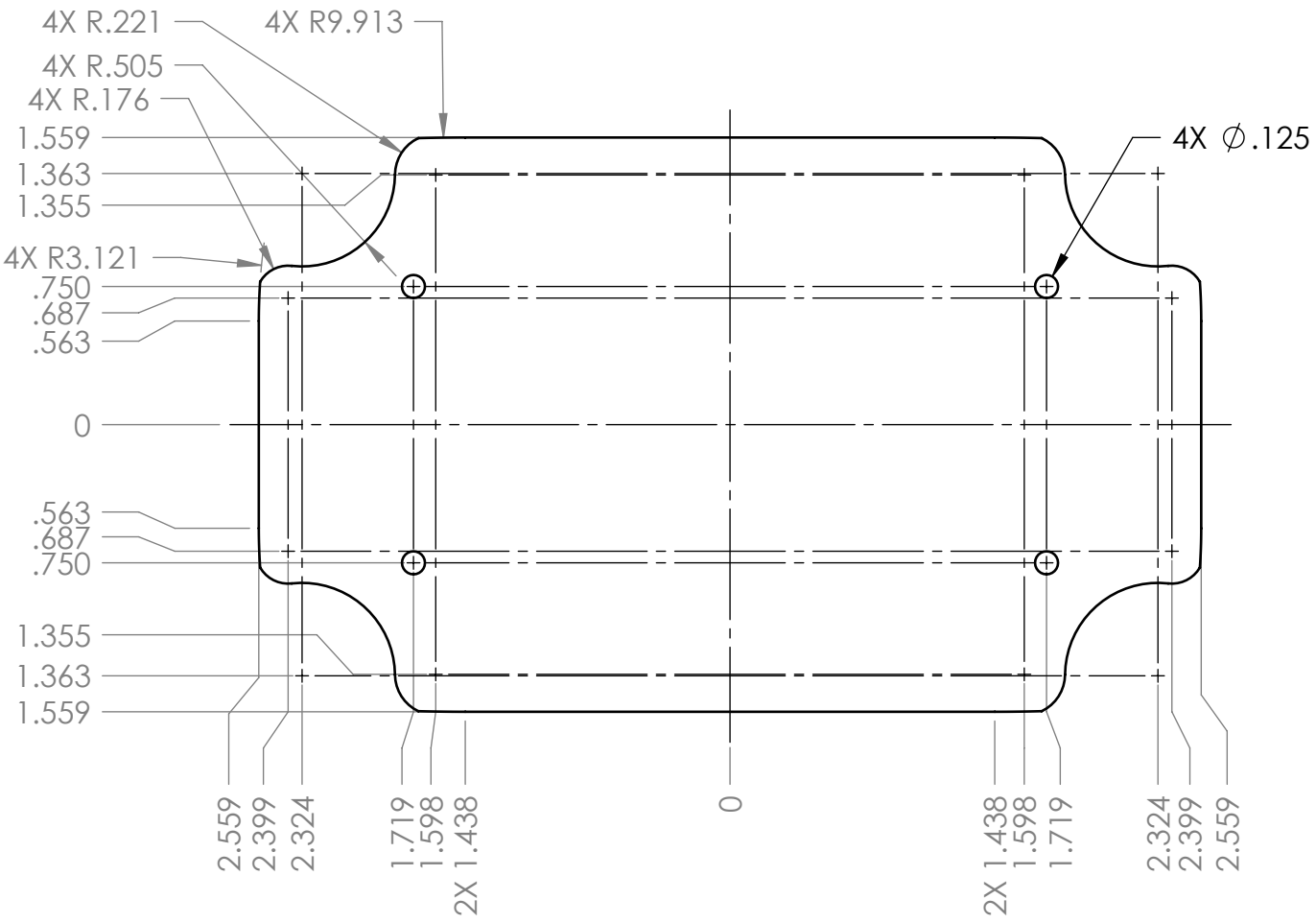
SCALE: 1:1

1305 CHESTER IND. PARKWAY AVON, OHIO 44011-1083 U.S.A.  
 PH#: 1-800-248-1233, 440-934-0444 FAX#: 440-934-0088

8 7 6 5 4 3 2 1

8 7 6 5 4 3 2 1

D  
C  
B  
A



NOTES:  
 1. PCB SIZES INCLUDE .031 CLEARANCE FROM INNER WALLS AND SCREW TOWERS WHEN UTILIZING THE MOUNTING BOSSES FOUND ON THE HD-35CMBT COVER  
 2. PCB BOSSES WILL ACCEPT A #4 X .250 LONG THREAD FORMING SCREW (SCREWS AVAILABLE FROM POLYCASE)

REV.	DESCRIPTION	ZONE	BY	APPR'D	DATE
-	UPDATED SHEET FORMAT				4/8/2011
-	PRELIMINARY RELEASE		D.M.F.	B.M.B.	1/13/2010

UNLESS OTHERWISE SPECIFIED:  
 DIMENSIONS ARE IN: INCHES[mm]  
 TOLERANCES: ANGULAR: ±2°  
 TWO PLACE DECIMAL: ±.010  
 THREE PLACE DECIMAL: ±.005  
 PRINTED GRAPHICS: ±.010

PROPRIETARY AND CONFIDENTIAL  
 THE INFORMATION CONTAINED IN THIS DRAWING IS THE SOLE PROPERTY OF POLYCASE. ANY REPRODUCTION IN PART OR AS A WHOLE WITHOUT THE WRITTEN PERMISSION OF POLYCASE IS PROHIBITED.  
 CAD FILE: HD-35C-PCB

PART NO. HD-35C-PCB		MATERIAL	
FLAME RATING	SIZE <b>B</b>	NAME	DATE
		D.M.F.	12/14/2009
DRAWN	CHECKED	B.M.B.	1/13/2010

**polycase**  
 1305 CHESTER IND. PARKWAY AVON, OHIO 44011-1083 U.S.A.  
 PH#: 1-800-248-1233, 440-934-0444 FAX#: 440-934-0088

PCB TEMPLATE FOR HD-35CMBT

REV **-.01**

SCALE: 1:1

SHEET 1 OF 1

8 7 6 5 4 3 2 1